

# ASPECT

N I S E K O

## APARTMENT 203

FLOOR AREA  
116.52m<sup>2</sup> (inc. 1.70m<sup>2</sup> owner storage)

BALCONY  
6.7m<sup>2</sup> (Exclusive use non-saleable area)

PARKING  
Non-reserved; subject to availability

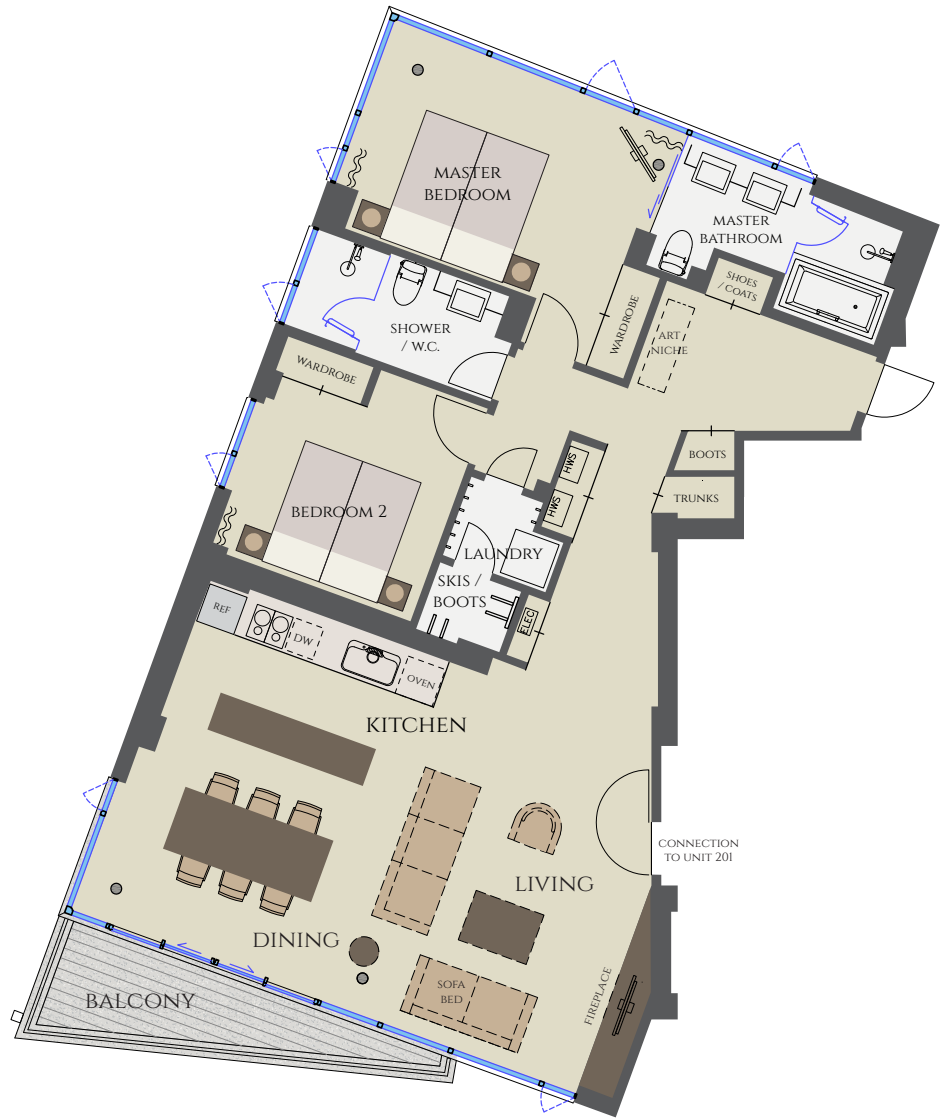
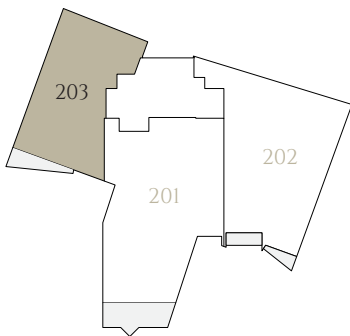
LAYOUT  
2 bedrooms / 2 bathrooms

VIEWS  
Mt Yotei, Mt Niseko-Annupuri

NORTH



MT. YOTEI



# ASPECT

N I S E K O

## APARTMENT 303

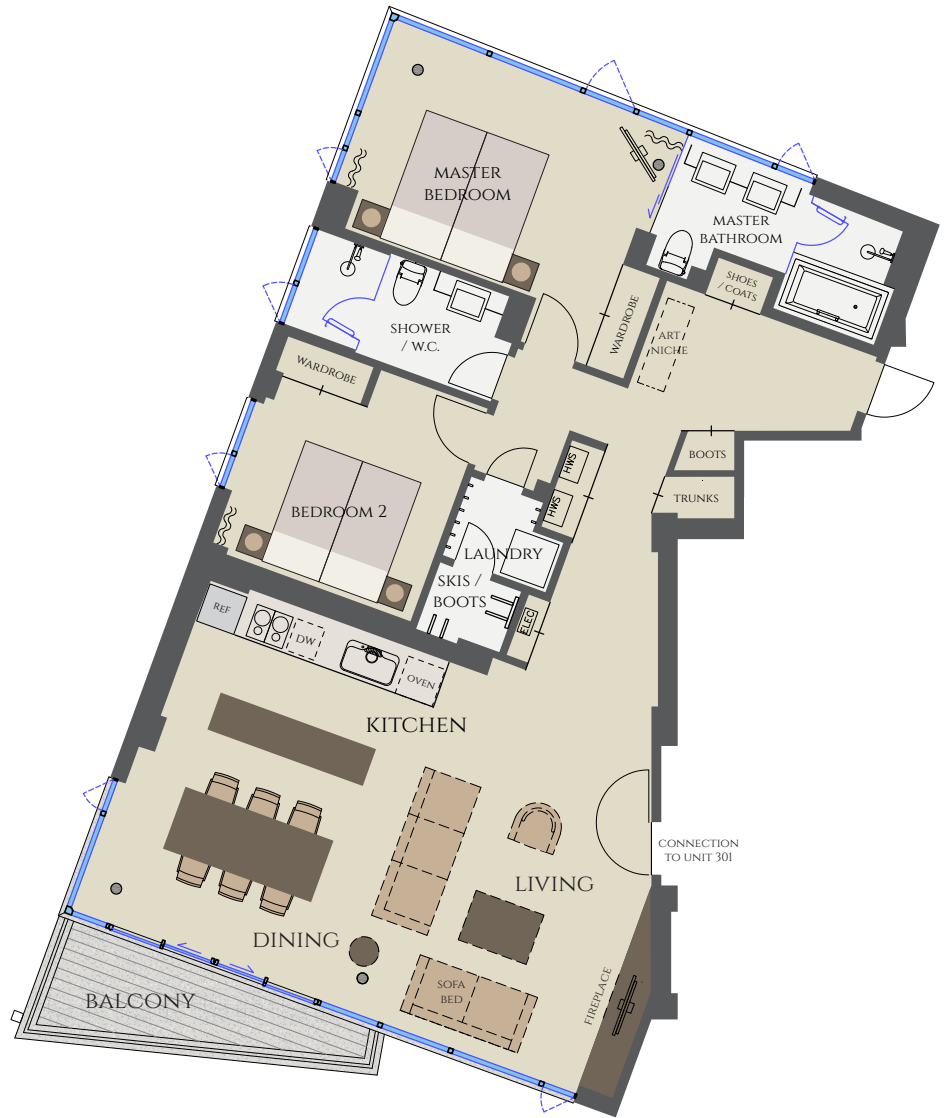
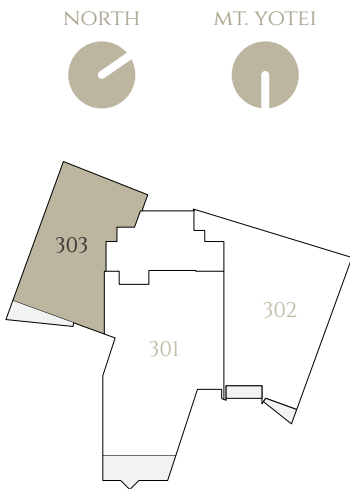
FLOOR AREA  
116.52m<sup>2</sup> (inc. 1.70m<sup>2</sup> owner storage)

BALCONY  
6.2m<sup>2</sup> (Exclusive use non-saleable area)

PARKING  
Non-reserved; subject to availability

LAYOUT  
2 bedrooms / 2 bathrooms

VIEWS  
Mt Yotei, Mt Niseko-Annupuri



# ASPECT

N I S E K O

## APARTMENT 403

FLOOR AREA  
116.52m<sup>2</sup> (inc. 1.70m<sup>2</sup> owner storage)

BALCONY  
5.5m<sup>2</sup> (Exclusive use non-saleable area)

PARKING  
Non-reserved; subject to availability

LAYOUT  
2 bedrooms / 2 bathrooms

VIEWS  
Mt Yotei, Mt Niseko-Annupuri

