

# Moiwa Ropeway Mega Mansion



CHRISTIE'S  
INTERNATIONAL REAL ESTATE

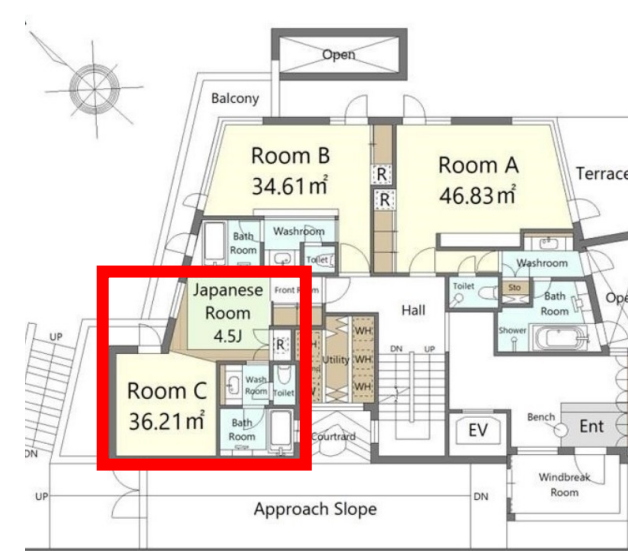
¥210,000,000 / US\$ 1,566,000

- Floor area: 523 m<sup>2</sup>
- Bedrooms: Total 4\*
- \*2 large ensuite western style rooms + a house within a house 2 bedroom Japanese apartment with exquisite detailing and ensuite western bathroom.
- Parking for 6 cars
- Floor heating
- 6 person elevator
- Marble and hardwood flooring throughout
- Located in Fushimi, the Beverly Hills of Sapporo

**The Japan apartment:** This amazing house within a house is a beautifully built and completely separate apartment for the ultimate guest experience.



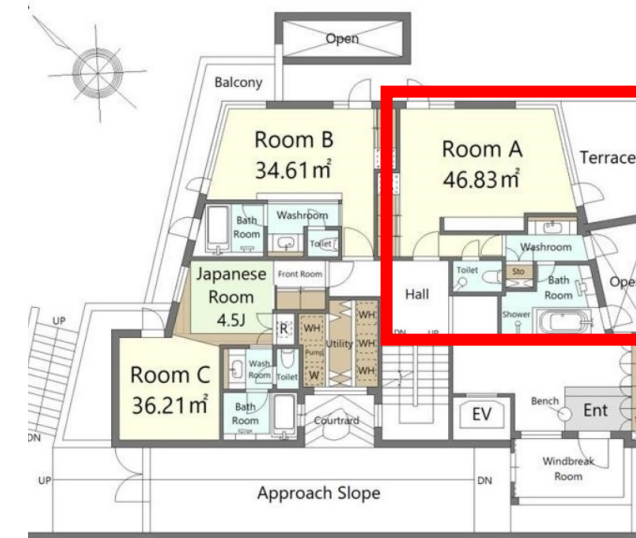
**CHRISTIE'S**  
INTERNATIONAL REAL ESTATE



**Bedroom A:** Big, beautiful with hardwood floors and marble ensuite bathroom and terrace to take in the fresh Hokkaido air and the views.



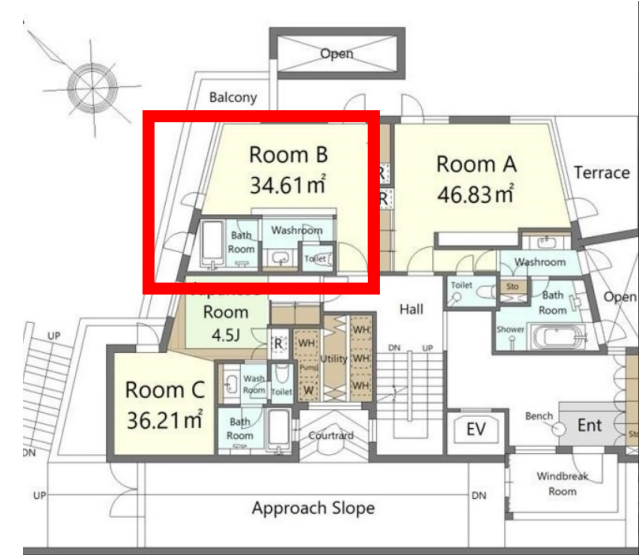
CHRISTIE'S  
INTERNATIONAL REAL ESTATE



**Bedroom B:** Big, beautiful with hardwood floors and marble ensuite bathroom and terrace to take in the fresh Hokkaido air and the views.



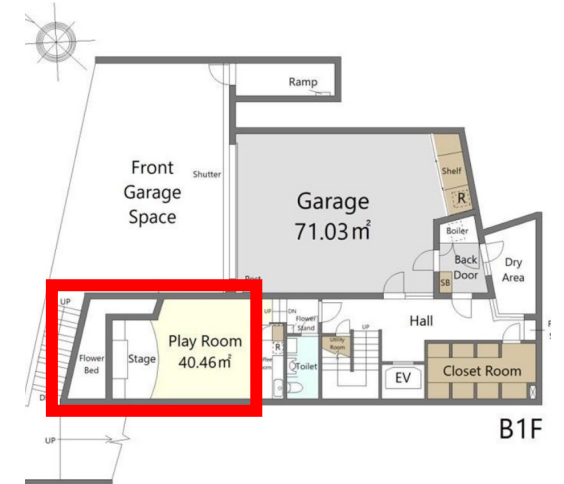
**CHRISTIE'S**  
INTERNATIONAL REAL ESTATE



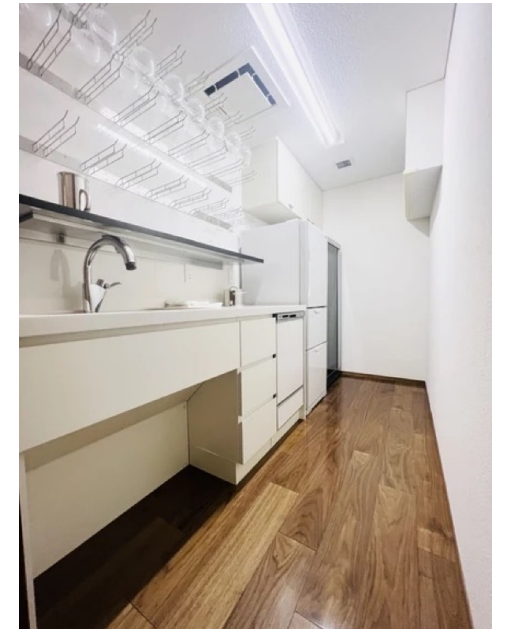
**Play room with stage:** Who hasn't wanted a house with a stage? A party room with a hidden kitchen for the ultimate in entertaining. Sing karaoke with your friends or have the kids put on a play.



**CHRISTIE'S**  
INTERNATIONAL REAL ESTATE



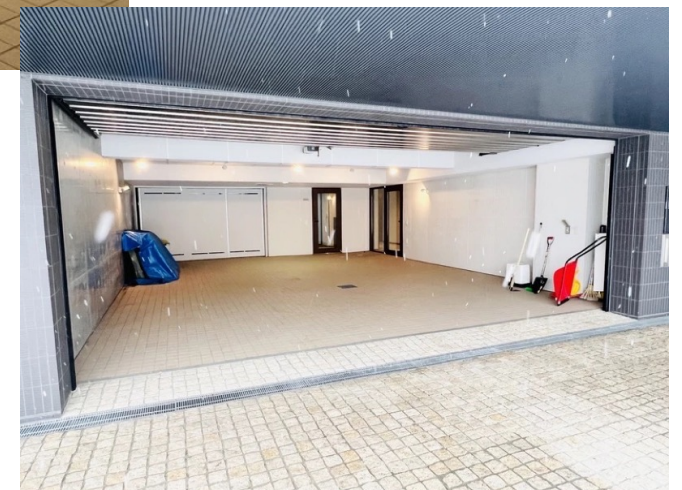
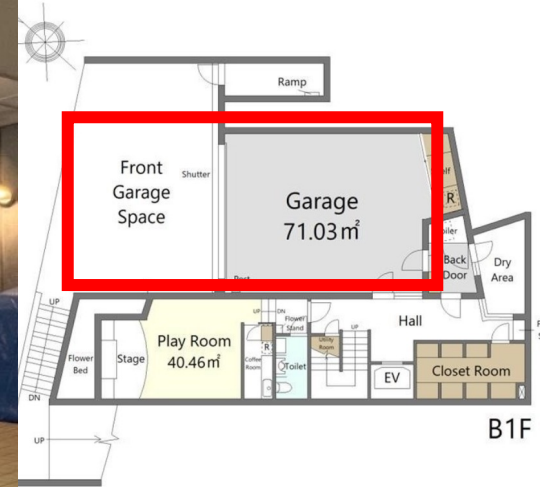
B1F



**Parking for 6:** 3 car garage + road heating + 3 cars outside. Don't have your friends park on the street. Wake up to a nice, warm snow free car every morning.



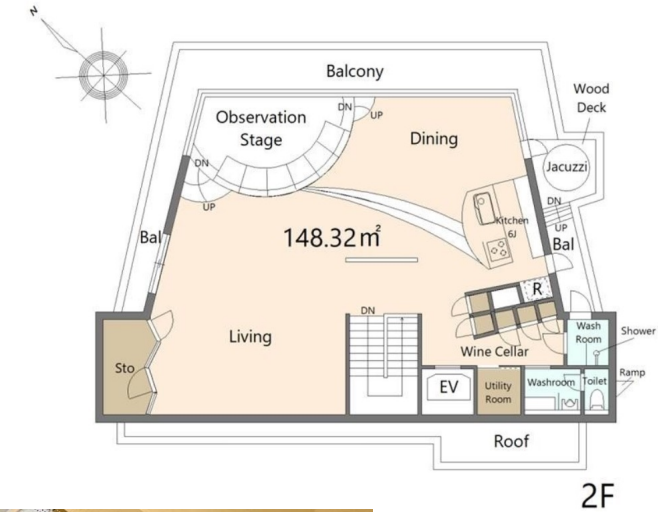
**CHRISTIE'S**  
INTERNATIONAL REAL ESTATE



**BIG ENTERTAINMENT AREA:** As you enter the massive 148m<sup>2</sup> living room, you'll be greeted by a panoramic viewing platform that overlooks the Sapporo cityscape. Imagine hosting your friends and family in this stunning space, complete with hardwood flooring and marble tile. And when it's time to unwind, you'll love the big, beautiful glass wine storage cabinet, perfect for storing your favorite bottles.



**CHRISTIE'S**  
INTERNATIONAL REAL ESTATE



## BIG ENTERTAINMENT AREA:



CHRISTIE'S  
INTERNATIONAL REAL ESTATE





# BIG ENTERTAINMENT AREA:



CHRISTIE'S  
INTERNATIONAL REAL ESTATE



## BIG ENTERTAINMENT AREA:



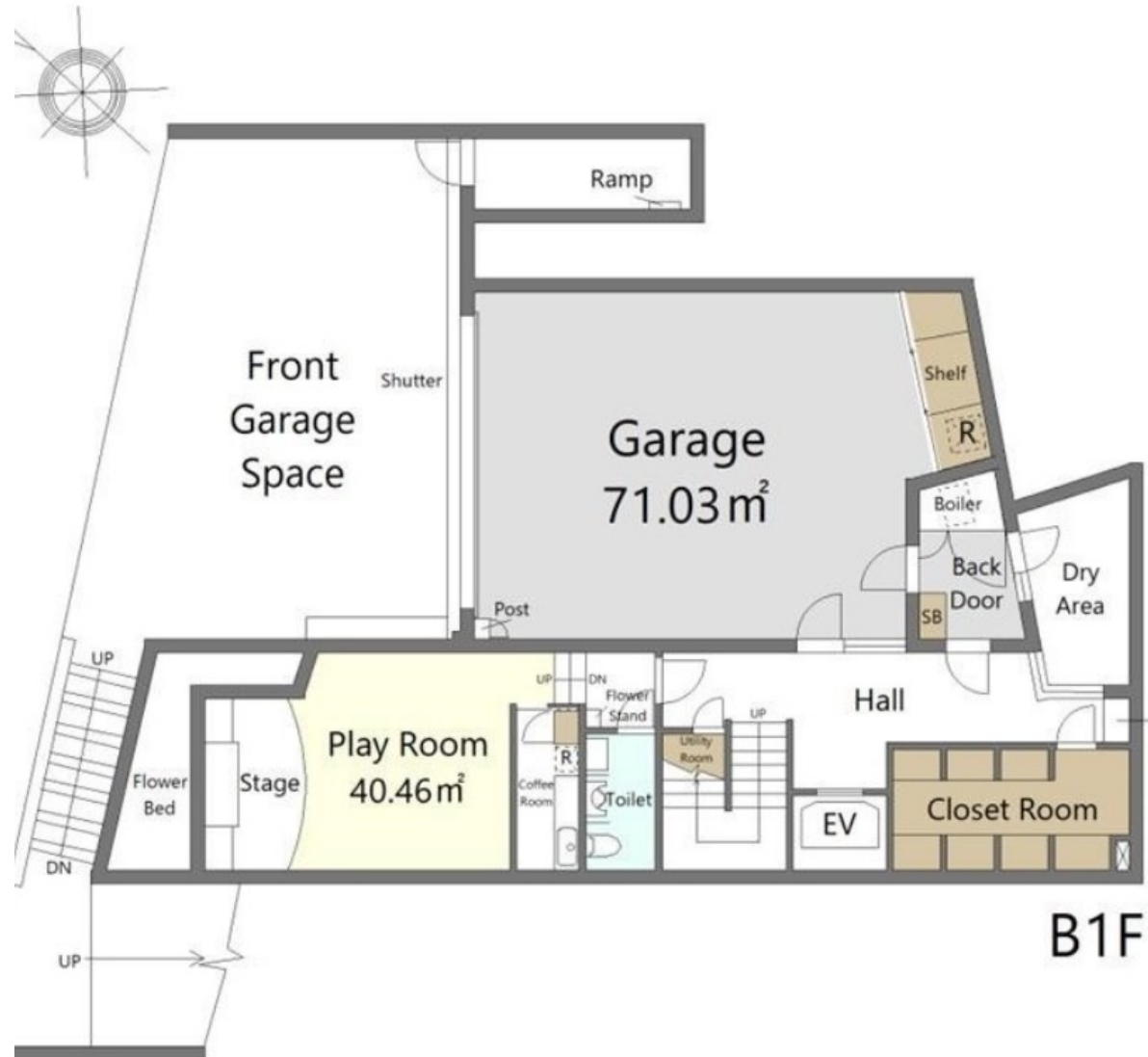
CHRISTIE'S  
INTERNATIONAL REAL ESTATE



# Floorplans: B1F



CHRISTIE'S  
INTERNATIONAL REAL ESTATE



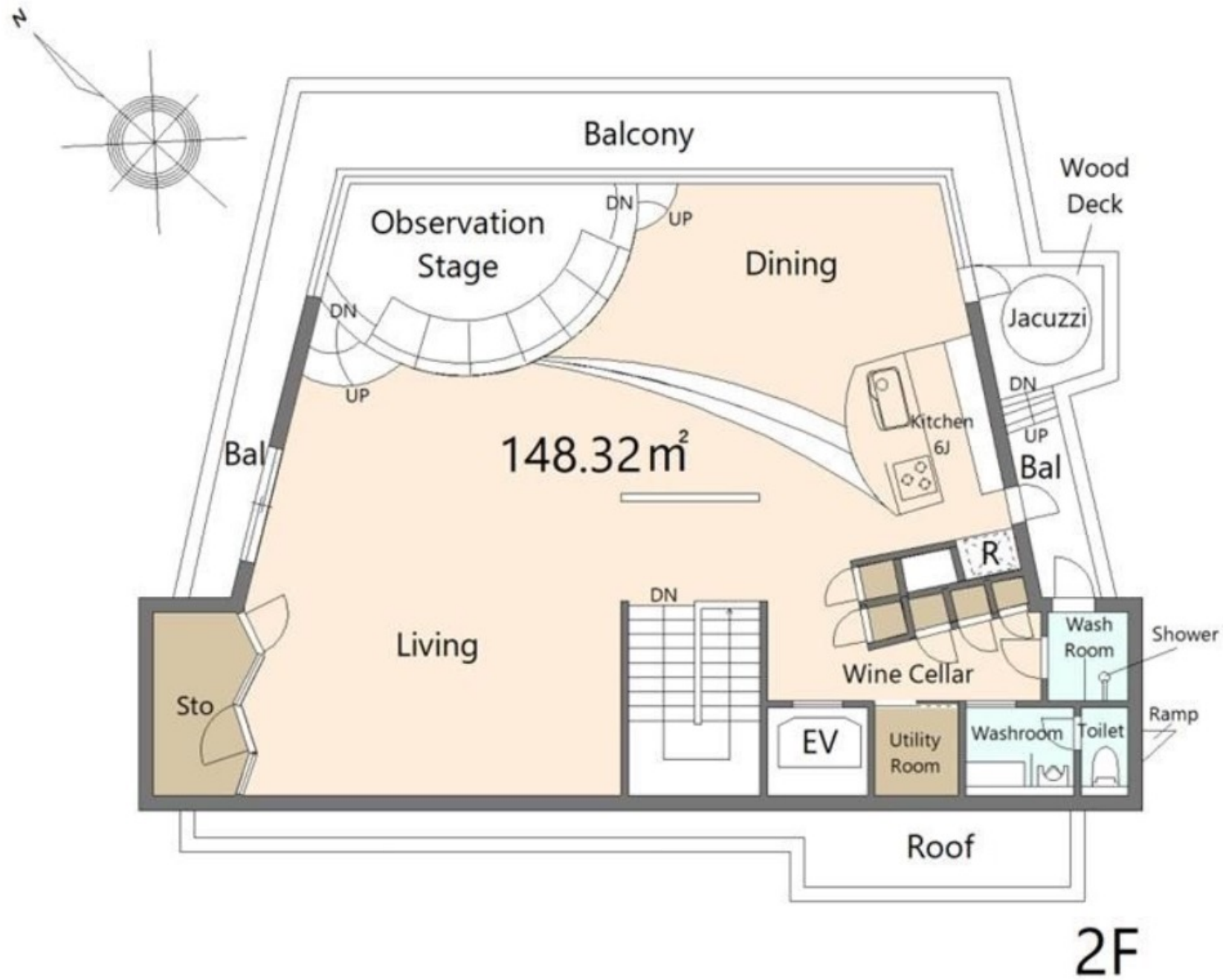
# Floorplans: 1F



CHRISTIE'S  
INTERNATIONAL REAL ESTATE



# Floorplans: 2F



2F



CHRISTIE'S  
INTERNATIONAL REAL ESTATE

## Location Map

Cut and paste for exact location:

<https://www.google.com/maps/s/d/edit?mid=1Y2RyzS25ug3UuHo66t43s9bbcmNQNIM&usp=sharing>

Or click [here](#).

