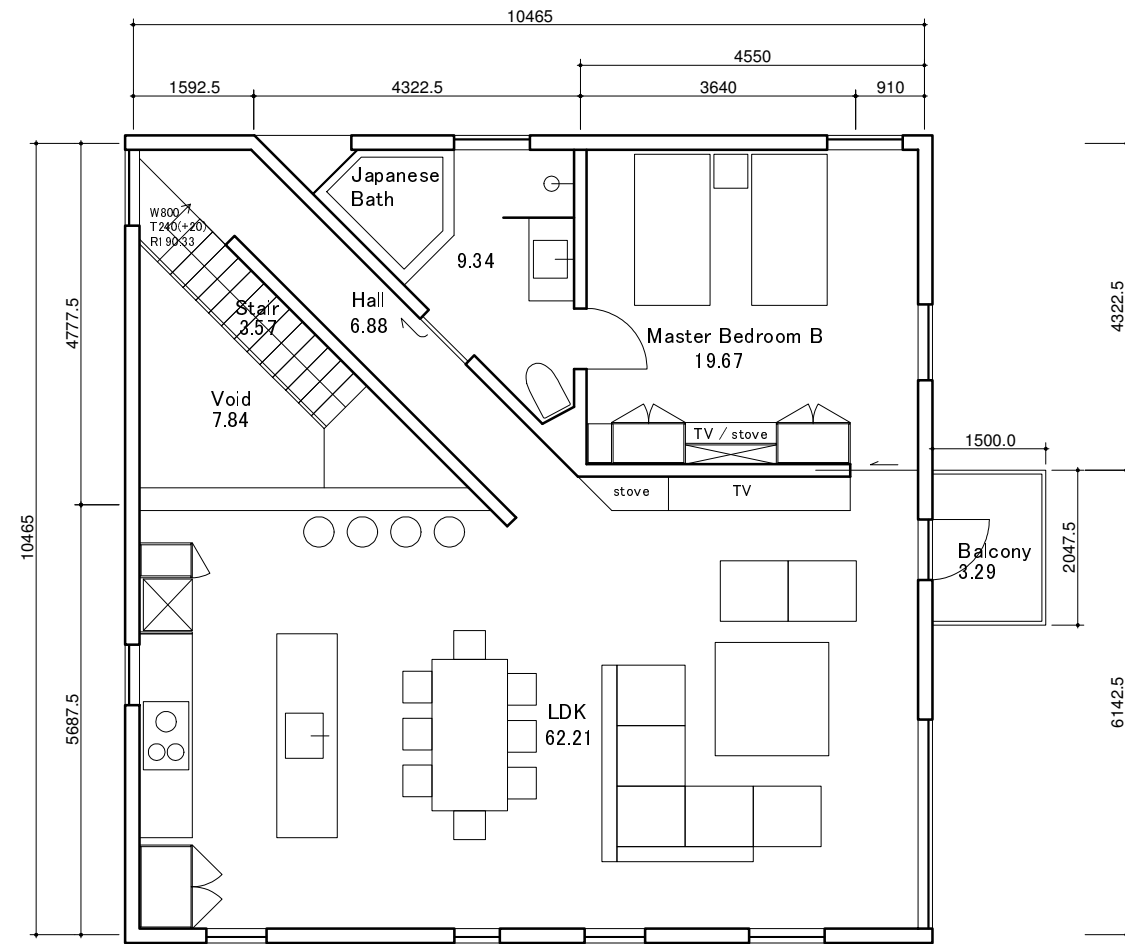


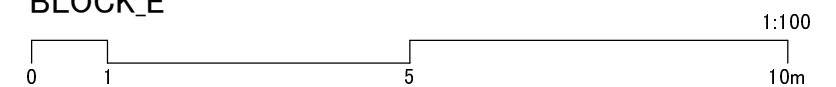
1F



2F

1F	86.02sqm	(Parking) 22.00sqm	(Under Stair) 1.50	
2F	101.68sqm	(void) 7.84sqm	(Balcony) 3.29sqm	Construction Area
Total area	187.69sqm	29.84sqm	4.79sqm	222.32sqm

BLOCK_E



02.04.2016