

Solid Investment Return

Put your money to work in Kutchan, Niseko

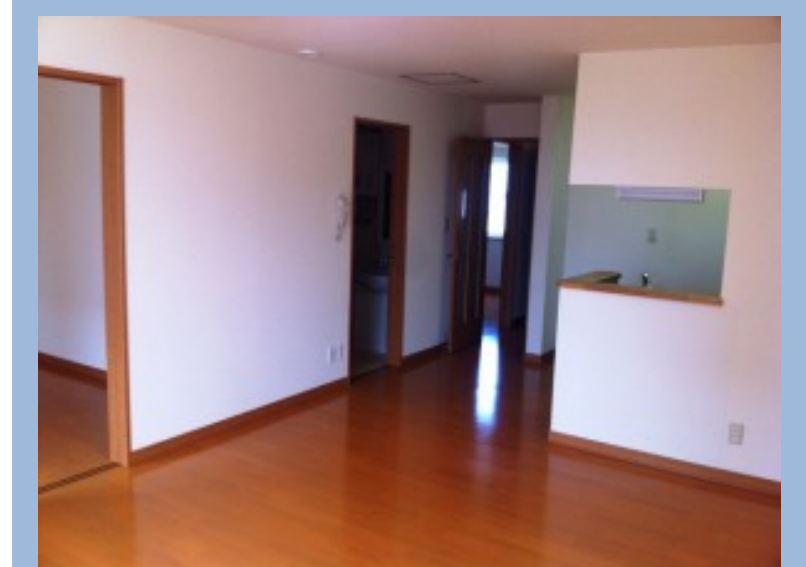


Details

Address: Japan, Hokkaido Prefecture, Abuta District, Kutchan, Minami 4 Jonishi, ???????
Property Type: Apartment
Location: Kutchan
Price: ¥38,500,000
Land Size sqm: 363
Price per sqm: 151,574
Floor Area sqm: 254
Year Built: 2004
status: Sale

Features

2LDK, 4 Apartments, Central Kutchan location, Parking



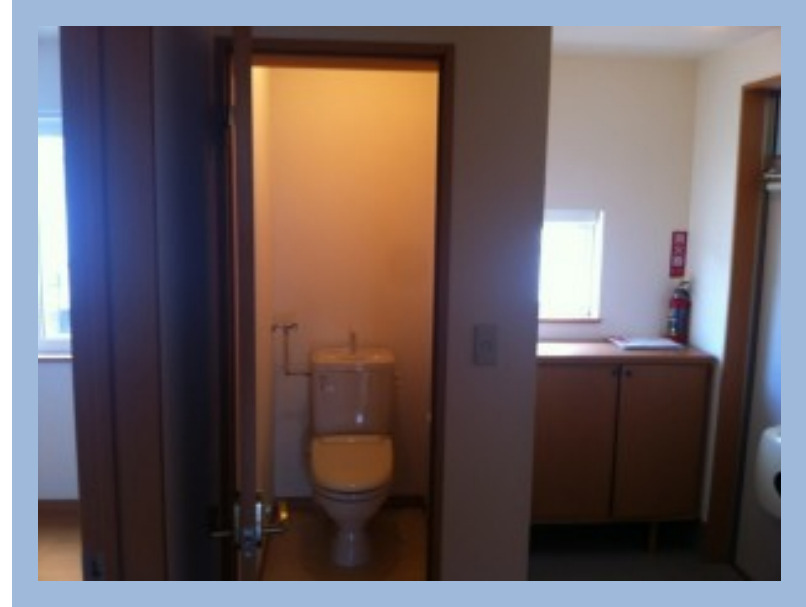
Description

Looking for a solid rental return property in the Japanese market? Here is an opportunity for someone to pick up a small apartment block in Niseko that has four, 2 bedroom apartments all tenanted and in good standing.

The apartment block is 9 years old and overall in excellent condition inside and out. Each unit has 2 bedrooms with a living – dining – kitchen, a full unit bath with a separate toilet, making these apartments ideal rentals for the domestic Japanese market.

The apartments are professionally managed by a local Japanese real estate company so there is no need to get involved with tenancing and managing the asset. It's all taken care of for you.

For more details on this outstanding investment return please get in contact today.



Location



Scan the code above with your mobile device or click it to go directly to the Hokkaido Tracks



